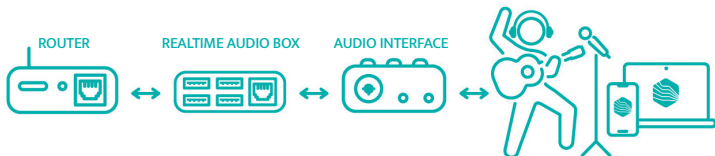




RealTime Audio

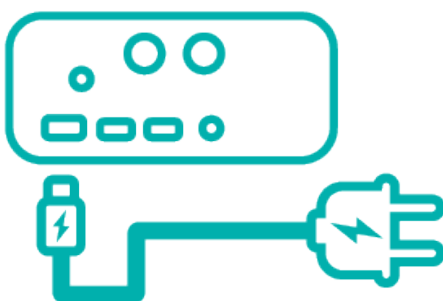


Connecting Your RealTime Audio Equipment



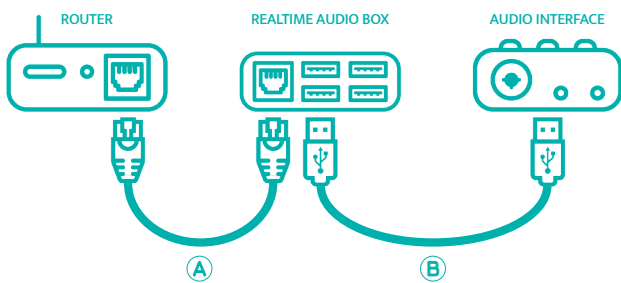
Scan for a setup video

Step 1. Connect Power Supply to RealTime Portal



Plug the USB-C power supply into your RealTime Audio Box and then into the wall.

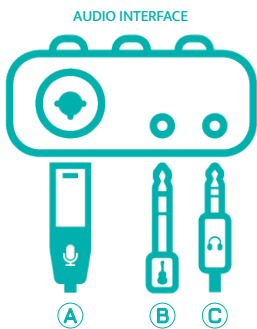
Step 2. Connect Router & Audio Interface to RealTime Portal



A Using the ethernet cable provided, connect your RealTime Portal to your internet router.

B Using a USB cable, connect your RealTime Portal to any, class compliant, USB audio interface (not provided).

Step 3. Connect Microphone, Instrument & Headphones



A Plug in your microphone. The microphone will be used for talkback, singing, and for use with acoustic instruments.

B Plug in your instrument.

C Plug in your headphones.

⚠ Only use headphones with two insulating bands on the connector plug (1/8" [3.5 mm] TRS).



D Turn up the volume!

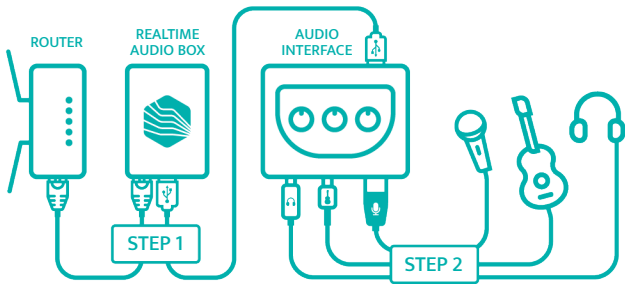
⚠ Make sure your audio interface has **Direct Monitor** disabled.



⚠ If you have an **"Input/Playback"** knob make sure it's turned all the way to **"Playback"**.



The Complete Setup

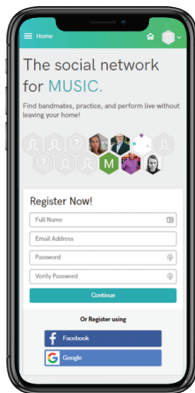


! When you hear “Your RealTime Portal is ready to connect” you are ready to open the RealTime Audio app.

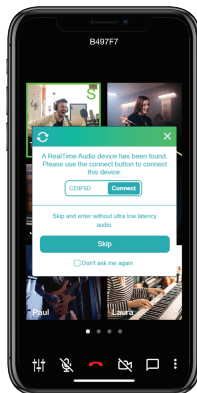
Step 4. Go to:
www.social.realtimeaudio.com/?video=tutorial



Step 5. Register & Pair with your RealTime Portal




A Register your account

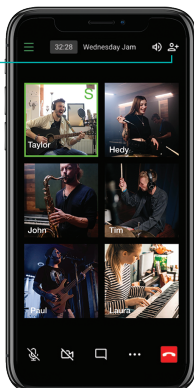


B Wirelessly pair the app with your RealTime Portal


! If prompted, grant access to your microphone and camera.

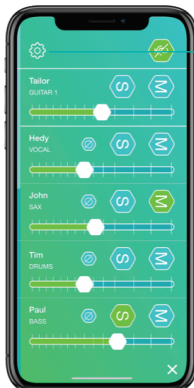
You Are Now Connected! Let's get some friends here!

Click the  icon to invite others with a RealTime Audio powered device to join the jam.



Webcam View

Click the  icon on your personal mixer to explore and change your settings.



Mixer

Have fun jamming!

For more information, contact:
support@realtimeaudio.com
www.realtimeaudio.com

 RealTime Audio